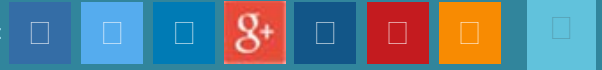


FOLLOW US :



ENGINEERING

INDUSTRIES

NEWS

TRENDING

VIDEO

MAGAZINE

LOGIN

# 56 Gbps Fastest Wireless Transmission Speed



GineersNow News  
Admin



## Trending



[Brits test Harry Potter inspired Invisib...](#)



Via [Giphy](#)

Tokyo and Kawasaki, Japan - Tokyo Institute of Technology and Fujitsu Laboratories Ltd. today announced that, in an effort to further enlarge the capacity of wireless equipment, they have developed a CMOS wireless transceiver chip that can process signals at high speeds with little loss across a broad range of frequencies, from 72 to 100 gigahertz (GHz). They also developed technology to modularize it. With these developments, they succeeded in achieving wireless transmission speeds of 56 Gigabits per second (Gbps), the world's fastest.

24.03.2016



[This School is Turning Girls into Engine...](#)

24.03.2016



[Do You Need Math to Enter Civil Engineer...](#)

24.03.2016



[Dubai and Doha Tops Smart Buildings in M...](#)

24.03.2016



[Your Favorite Scientists and Engineers a...](#)

13.03.2016



[10 Equations that Changed the World...](#)

13.03.2016



[Find Out the Annual Salary of Mechanical...](#)

14.03.2016



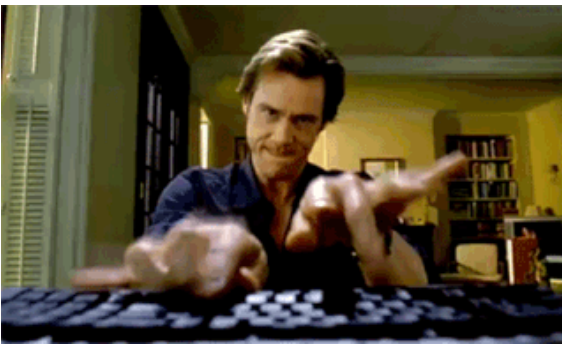
[What It Means to be an Engineer Coming f...](#)

15.03.2016



## Related Articles

[Buy Your Next House Using VR Headsets, Drones and Internet](#)

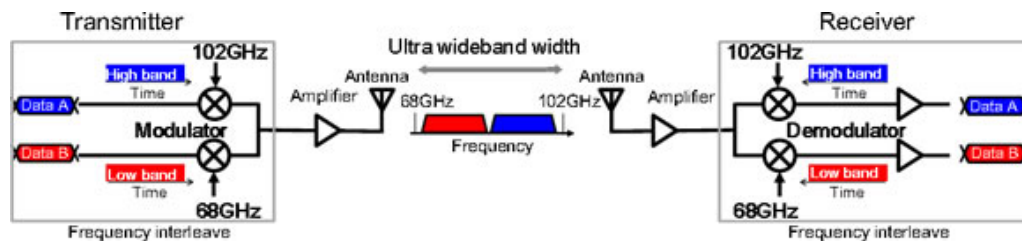


Source: jezebel

In recent years, to cope with the large increase in data traffic resulting from the widespread use of smartphones and other devices, networks that link base stations use optical fiber. One issue with this approach, however, is that it is difficult to expand service in areas where it is difficult to install a network of optical fiber cables, such as in urban areas or areas surrounded by rivers or mountains. To deal with this issue, Tokyo Institute of Technology and Fujitsu Laboratories have now developed high-speed wireless transceiver technologies that use the millimeter-waveband (30-300 GHz), where there are few competing wireless applications, and which are capable of large-capacity communications.

This technology makes it possible to have high-capacity wireless communications equipment that can be installed outdoors in applications where fiber-optic networks would be difficult to lay.

The details of this technology will be announced at the IEEE International Solid-State Circuits Conference 2016 (ISSCC 2016), the largest conference related to semiconductor technology, opening in San Francisco on January 31 (ISSCC Presentation Number 13.3).



Source: Fujitsu

Background



09.03.2016



Virtual Reality to be tackled at Video Game Conference

15.03.2016



Screening Room offers New Theater Technology at your own home

14.03.2016



Are autonomous vehicles the future?

27.01.2016



More Steps Forward for a Promising Mobile Connectivity in Australia

15.01.2016

With sharp increases in data communications traffic resulting from the proliferation of smartphones, the expansion in the capacity of backbone networks - which connect wireless base stations to core networks, and base stations to each other - is accelerating. In the past, macro-cell base stations were mainly used, each of which can cover an area with several kilometers of range, but in recent years these have been supplemented with large quantities of small-cell base stations, each of which has a range of only a few hundred meters, to accommodate the increase in communications traffic.

Also, fiber-optic lines, which can transmit large volumes of data, are currently the most common way to handle communications between base stations. But laying new fiber-optic cables can be difficult in tightly packed urban areas, or in places hemmed in by mountains or rivers, so it has been hoped that high-capacity wireless equipment could be created that can easily be installed outdoors.

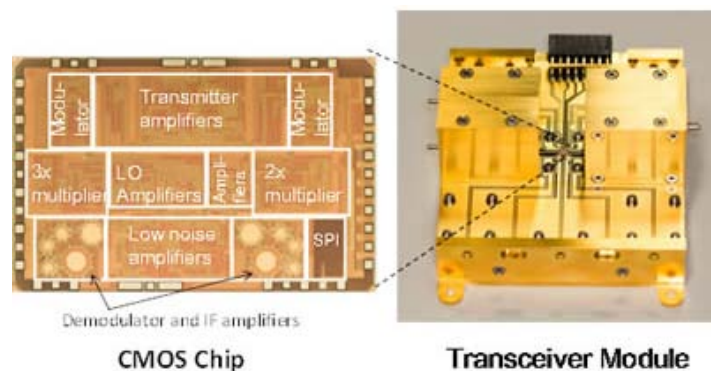


Source: Giphy

## Issues

High-capacity wireless transmissions need to use broad frequency ranges. This makes the use of the millimeter-waveband a suitable option, as few competing wireless applications use it. But because the millimeter-waveband uses such high frequencies, designing CMOS integrated circuits for that purpose has been a challenge, as the circuits need to be

designed to operate near their limits. It has also been difficult to develop low-loss transceiver circuits that modulate and demodulate broadband signals into and out of the millimeter-waveband with high quality, and low-loss interface circuits, which connect the circuit board to the antenna.



Source: Fujitsu

## About the Technology

The newly developed CMOS wireless transceiver chip and the wireless module that includes it (Figure 1) are comprised of two key technologies.

### 1. Low-loss, high-bandwidth transceiver circuit

Tokyo Institute of Technology developed a technology for broadband, low-loss transceiver circuits in which data signals are split in two, with each converted to different frequency ranges, and then recombined (Figure 2). Each signal is modulated into a band 10-GHz wide, with the low-band occupying the 72-82 GHz range, and the high-band occupying the 89-99 GHz range. This technology enables modulation on an ultra-wideband signal of 20 GHz, with low noise and a similar range in the ratio between input and output power as existing 10 GHz band methods, which results in high-quality signal transmissions.

Tokyo Institute of Technology also developed an amplifier to send and receive as radio waves signals converted to the millimeter-waveband. The ultra-wideband amplifier for 72 to 100 GHz was designed with circuit technologies that stabilize the amplification ratio by feeding the amplitude of the output signal back to the input side for signal components whose amplification ratio decreases based on frequency.



Source: *gifnews*

## 2. Modularization technology

The signal converted to the millimeter-waveband by the semiconductor chip is transported over the circuit board's signal path and supplied to the antenna. Because the antenna is made out of a waveguide (a metallic cylinder), there needs to be an ultra-wideband, low-loss connection between the printed circuit board and the waveguide. Fujitsu Laboratories and Tokyo Institute of Technology developed an interface between the circuit board and waveguide that uses a specially designed pattern of interconnects on the printed circuit board to adjust the impedance for the ultra-wideband range, enabling loss in the desired frequency range to be greatly reduced.

In this development project, Tokyo Institute of Technology was primarily responsible for reducing transceiver-circuit losses and developing broadband technologies, while Fujitsu Laboratories mainly handled modularization technologies.



## Results

Indoor data-transfer tests were conducted, with two modules facing each other separated by a distance of 10 cm. These tests achieved data-transfer rates of 56 Gbps, the fastest wireless transmission speeds in the world, with loss of maximum 10% between the waveguide and circuit board.

By combining the technologies developed in this project with high-output amplifier technology, used to amplify the signal and increase the transport range, and baseband-circuit technology, used to process ultra-wideband signals, it is possible to increase the capacity of wireless equipment that can be installed outdoors. By doing so, even in places where new fiber-optic lines are difficult to install, such as urban areas and places surrounded by mountains or rivers, a high-capacity wireless base station network can be deployed, thereby contributing to the provision of a comfortable communications environment in those places.

## Future Plans

Fujitsu Laboratories aims to have a commercial implementation of wireless trunk lines for cellular base stations around 2020.



Source: *szophialeigh*

### About Tokyo Institute of Technology

Tokyo Institute of Technology stands at the forefront of research and higher education as the leading university for science and technology in Japan. Tokyo Tech researchers excel in a variety of fields, such as material science, biology, computer science and physics. Founded in 1881, Tokyo Tech has grown to host 10,000 undergraduate and graduate students who become principled leaders of their fields and some of the most sought-after scientists and engineers at top companies. Embodying the Japanese philosophy of monotsukuri, meaning technical ingenuity and innovation, the Tokyo Tech community strives to make significant contributions to society through high-impact research.

### About Fujitsu


Fujitsu is the leading Japanese information and communication technology (ICT) company, offering a full range of technology products, solutions, and services. Approximately 159,000 Fujitsu people support customers in more than 100 countries. We use our experience and the power of ICT to shape the future of society with our customers. Fujitsu Limited (TSE: 6702) reported consolidated revenues of 4.8 trillion yen (US\$40 billion) for the fiscal year ended March 31, 2015.

### About Fujitsu Laboratories

Founded in 1968 as a wholly owned subsidiary of Fujitsu Limited, Fujitsu Laboratories Ltd. is one of the premier research centers in the world. With a global network of laboratories in Japan, China, the United States and Europe, the organization conducts a wide range of basic and applied research in the areas of Next-generation Services, Computer Servers, Networks, Electronic Devices and Advanced Materials.

## □ Sources

- [Fujitsu](#)

 Vote Now :

[Report any abuse](#)

BADASS	GENIUS	INSPIRE	LMAO	LOVE	WTF	WOW	NOPE	FAIL	WHATEVER
0	50	0	0	0	0	0	0	0	0



0 Comments

Sort by

Newest >



Login to post comment



## Subscribe to GineersNow

Kickass engineering stories delivered weekly



About Us

Advertise

Submit Kickass Stories



Geek Meter

- BADASS
- GENIUS
- INSPIRE
- LMAO
- LOVE
- WTF
- WOW
- NOPE
- FAIL
- WHATEVER

FOLLOW US :



[Terms and Conditions](#) | [Cookies Policy](#) | [Privacy & Cookies](#)

Published by GineersNow @ 2015. All Rights Reserved.